

FLOOR PLAN, LEVEL 173.900
1:125

SLABS:

SLAB TYPE	THICKNESS (MM.) *)	REINFORCEMENT	
		BOTTOM LAYER	TOP LAYER
I	150	Ø12/200 BD	Ø12/400 BD
II	150	Ø12/150 BD	Ø12/300 BD
III	200	Ø12/200 BD	Ø12/400 BD
IV	200	Ø16/200 BD	Ø16/400 BD
V	250	Ø16/150 BD	Ø16/300 BD
VI	300	Ø12/200 BD	Ø12/400 BD
VII	300	Ø16/200 BD	Ø16/400 BD
VIII	350	Ø16/150 BD	Ø16/300 BD
IX	600	Ø25/125 BD	Ø25/250 BD

*) MINIMUM THICKNESS

BEAMS:

BEAM NO.	HEIGHT (MM.) *)	REINFORCEMENT
PRIMARY BEAMS		
B1124 B1134	1450	GENERAL REINFORCEMENT REF. DWG. W2UVX/BR310
B1123 B1133	1450	
B1122 B1132	1450	
B1121 B1131	1450	
SECONDARY BEAMS		
B1291 B1292	1150	 ORIENTATION USED IN THE ABOVE DWG.
B1281 B1282	1150	
B1271 B1272 B1273	1150	
B1261 B1262 B1263	1150	
B1251 B1252 B1253	1150	
B1241 B1242 B1243	950	
B1231 B1232 B1233	950	
B1222 B1223	750	
B1212 B1213	750	
TERTIARY BEAMS **)		
B1303 B1304	650	
B1301 B1302	850	

*) TO BE MEASURED FROM LEVEL 173.900

**) CONNECTION TO SECONDARY BEAM REF. DWG. W2UVX/BR320

SYMBOLS:

- GULLY LOCATED C-SLAB (BOTH DIRECTIONS) UNLESS OTHERWISE INDICATED.
- REC. PIPE SUPPORTS REF. DWG. W2UVX/BR320.
- C CRANE SUPPORT REF. STEEL DWGS. (GROUP OF 4 CAST-IN ANCHOR BOLTS SUSPENDED FROM BEAM). EXTRA Ø12 DOUBLE STIRRUPS TO BE INSTALLED ON BOTH SIDES OF ANCHOR BOLTS - DISTANCE 175 MM FROM C ANCHOR BOLTS. STIRRUP SHAPE TO BE ADJUSTED ACCORDING TO ANCHOR PLATE.
- C CRANE SUPPORT REF. STEEL DWGS. (GROUP OF 2 CAST-IN ANCHOR BOLTS SUSPENDED FROM BEAM).

NOTES:

1. MEASURES IN MM. LEVELS IN M.
2. GENERAL NOTES REF. DWG. W2HT/BA101.
3. GULLY WITH VALVE.
4. Ø 50 DRAIN.

DWG. REFERENCES:

1. EQUIPMENT FOUNDATIONS, HOLES AND CAST-IN PARTS REF. DWG. W2UVX/BR140
2. TYPICAL DETAILS, REF. DWG. W2UVX/BR315, BR316

HOLDS:

1. TO BE CONFIRMED BY ELEVATOR SUPPLIER

RELEASED FOR CONSTRUCTION

RÅDGIVENDE INGENIØRER **ISC** CONSULTING ENGINEERS

Rev. d							
Rev. c							
Rev. b	EAF	120496	PJ	120496	PJ	120496	GENERAL REVISION
Original	EGP	221295	UBP	221295	PWJ	221295	Revision in zone. / Description:
Sign.	Date	Sign.	Date	Sign.	Date	Welding symbols: ISO-E	Scale: 1:125
Designed:	Checked:	Approved:	Adhere to general instruction:		Original format: A1		

External identity:
PRZEDSIĘBIORSTWO PAŃSTWOWE ELEKTROWNIA IM. T. KOŚCIUSZKI

Title:
Połaniec Power Station
Flue gas desulphurisation plant
FGD-plant (C-D), Central building
Floor plan, level 173.900, System
Concrete structures

Projection convent.: **ISO-E**

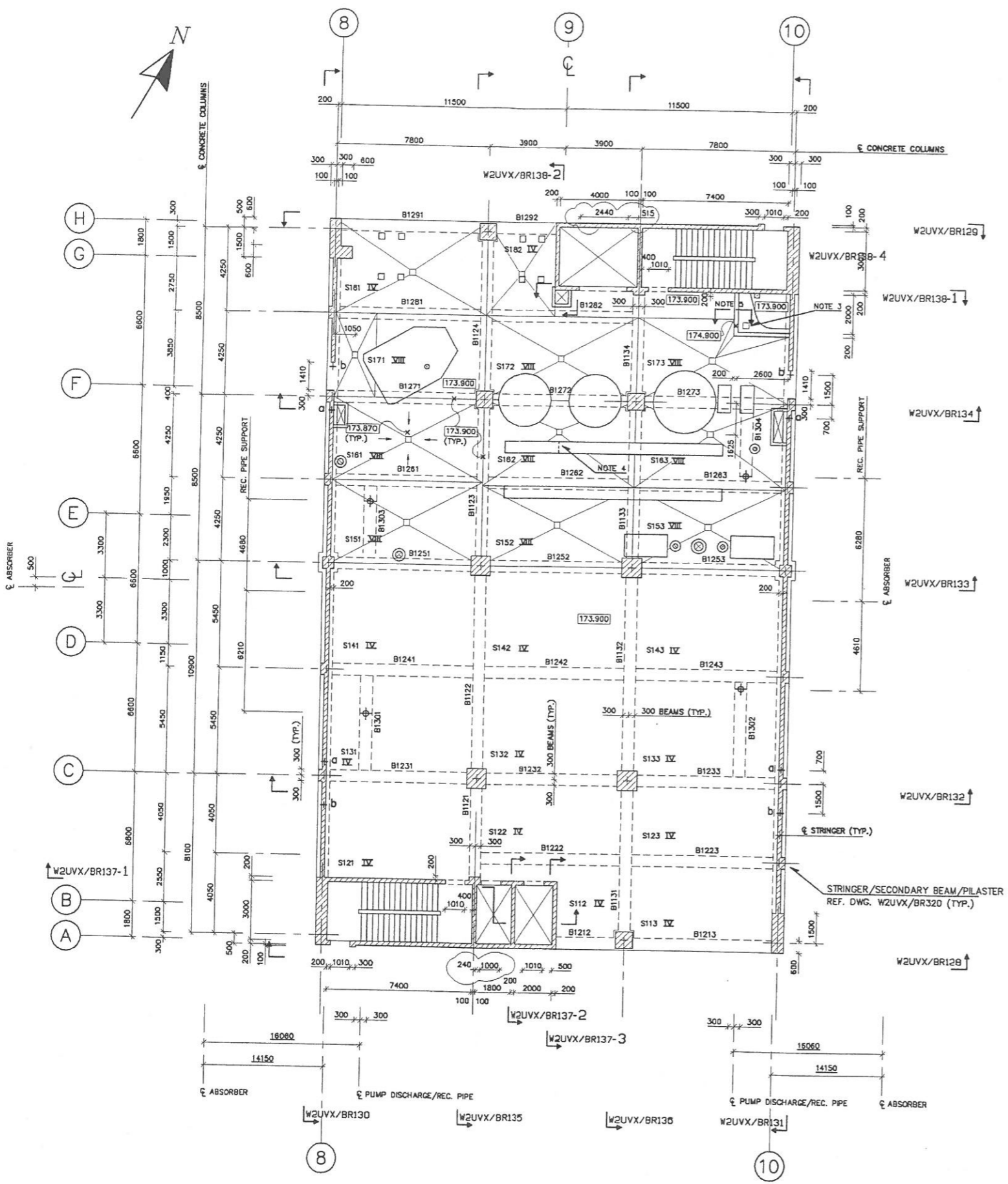
Status: _____ Ver. 2

Page: / of /

CAD file: A01394AB.DWG

FLS miljø FLS miljø a/s Copenhagen Denmark

Drawing No.: **W2UVX/BR121b**



FLOOR PLAN, LEVEL 173.900
1:125

SLABS:

SLAB TYPE	THICKNESS (MM.) *	REINFORCEMENT	
		BOTTOM LAYER	TOP LAYER
I	150	Ø12/200 BD	Ø8/175 BD
II	150	Ø12/150 BD	Ø10/175 BD
III	200	Ø12/200 BD	Ø10/250 BD
IV	200	Ø16/200 BD	Ø12/225 BD
V	400	Ø16/150 BD	Ø16/150 BD
VI	300	Ø12/200 BD	Ø10/250 BD
VII	300	Ø16/200 BD	Ø12/225 BD
VIII	350	Ø16/150 BD	Ø12/150 BD
IX	600	Ø25/125 BD	Ø25/250 BD

* MINIMUM THICKNESS

BEAMS:

BEAM NO.	HEIGHT (MM.) *	REINFORCEMENT
PRIMARY BEAMS		
B1124 B1134	1450	GENERAL REINFORCEMENT REF. DWG. W2UVX/BR310
B1123 B1133	1450	
B1122 B1132	1450	
B1121 B1131	1450	
SECONDARY BEAMS		
B1291 B1292	1150	 ORIENTATION USED IN THE ABOVE DWG.
B1281 B1282	1150	
B1271 B1272 B1273	1150	
B1261 B1262 B1263	1150	
B1251 B1252 B1253	1150	
B1241 B1242 B1243	950	
B1231 B1232 B1233	950	
B1222 B1223	750	
B1212 B1213	750	
TERTIARY BEAMS **)		
B1303 B1304	650	
B1301 B1302	850	

*) TO BE MEASURED FROM LEVEL 173.900

***) CONNECTION TO SECONDARY BEAM REF. DWG. W2UVX/BR320

SYMBOLS:

- GULLY. LOCATED C-SLAB (BOTH DIRECTIONS) UNLESS OTHERWISE INDICATED.
- REC. PIPE SUPPORTS REF. DWG. W2UVX/BR320.
- a+ C CRANE SUPPORT REF. STEEL DWGS. (GROUP OF 4 CAST-IN ANCHOR BOLTS SUSPENDED FROM BEAM). EXTRA Ø12 DOUBLE STIRRUPS TO BE INSTALLED ON BOTH SIDES OF ANCHOR BOLTS - DISTANCE 175 MM FROM C ANCHOR BOLTS. STIRRUP SHAPE TO BE ADJUSTED ACCORDING TO ANCHOR PLATE.
- b+ C CRANE SUPPORT REF. STEEL DWGS. (GROUP OF 2 CAST-IN ANCHOR BOLTS SUSPENDED FROM BEAM).

NOTES:

1. MEASURES IN MM. LEVELS IN M.
2. GENERAL NOTES REF. DWG. W2HT/BA101.
3. GULLY WITH VALVE.
4. Ø 50 DRAIN.
5. REFER DWG. W2UVX/BR316 SECTION 4.

DWG. REFERENCES:

1. EQUIPMENT FOUNDATIONS, HOLES AND CAST-IN PARTS REF. DWG. W2UVX/BR140
2. TYPICAL DETAILS, REF. DWG. W2UVX/BR315, BR316

RELEASED FOR CONSTRUCTION

RÅDGIVENDE INGENIØRER **ISC** CONSULTING ENGINEERS

Rev. d						
Rev. c	WFO	020597	WFO	020597	WFO	020597
Rev. b	EGP	120496	PVJ	120496	PVJ	120496
Original	EGP	221295	UBP	221295	PVJ	221295

Revision in zone: / Description: / Scale: 1:125

Designed: / Checked: / Approved: / Adhere to general instruction: / Original format: A1

External identity: PRZEDSIĘBIORSTWO PAŃSTWOWE ELEKTROWNIA IM. T. KOŚCIUSZKI

Title: **Polaniec Power Station**
Flue gas desulphurisation plant
FGD-plant (C-D), Central building
Floor plan, level 173.900, System
Concrete structures

Projection convent.: ISO-E
Status: Ver. 2
Page: / of /
CAD file: A01394AC.DWG
Drawing No.: W2UVX/BR121c

FLS miljø FLS miljø a/s Copenhagen Denmark